

# SHANTUI

# DH16-B3

Crawler Dozer



Engine Model: Weichai WD10  
Gross Power: 140kW(188hp)  
Operating Weight: XL:17,622kg/ LGP:18,933kg

Linde Hydrostatic Travel Drive  
electronic control

# DH16-B3 SPECIFICATIONS

ENGINE	
Engine	Weichai WD10
Emission	Tier II
Rated revolution	1800rpm
Gross power	140 kW(188hp)
Net power	127 kW(170hp)
Number of cylinder-bore × stroke	6-126mm*130mm
Displacement	9.7L
Max. torque	900Nm/1400-16000rpm
Min. fuel consumption	-
Cooling system	Mechanic fan

DRIVE SYSTEM	
Drive system	Independent dual-circuit electric control hydrostatic drive, intelligent matching of speed-load, "stepless" variable speed, mono-lever control of travel, speed and steering; steering with load, pivot steering, work flexibly, high efficiency, easy for maintenance
System overflow pressure	44500 kPa
Traveling speed	Forward 0~10km/h
	Backward 0~10km/h
Max. theoretical traction force	288kN
Steering	Independent drive of track at both sides to ensure the full power output for pivot steering and steering with load
Brake	Regular closed multi-disk brake
Final drive	Primary spur gear + primary planetary reduction

CHASSIS SYSTEM	XL	LGP
Type	Pivot, equalizing beam suspended type, semirigid structure	
Track shoe type	Single grouser	
Track gauge	2040mm	2350mm
Width of track shoe	560mm	850mm
Track grounding length	3075mm	3075mm
Track grounding area	34440cm <sup>2</sup>	52275cm <sup>2</sup>
Number of track shoe	43 pcs/side	43 pcs/side
Grounding pressure (standard configuration)	52kPa	35.6kPa
Number of carrier roller	2 pcs/side	2 pcs/side
Number of track roller	8pcs/side	8pcs/side
Pitch	203mm	203mm

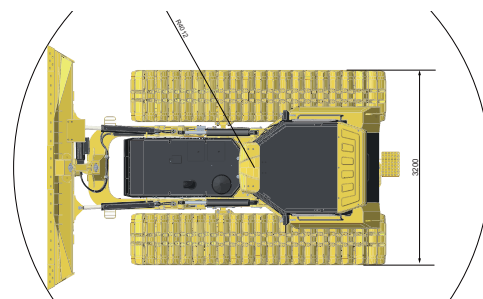
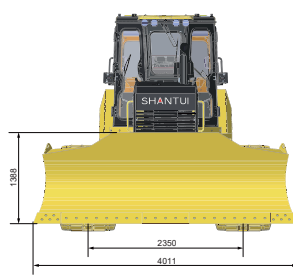
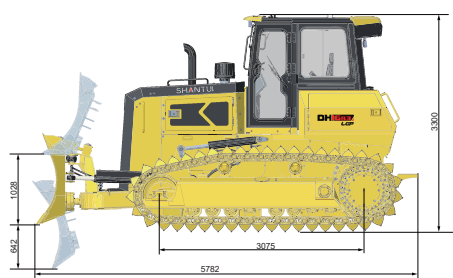
REFILL	XL	LGP
Fuel capacity	432L	432L
Coolant liquid capacity	22L	22L
Engine oil capacity	24L	24L
Hydraulic oil tank	165L	165L
Final drive	38L/side	38L/side

OPERATING WEIGHT	XL	LGP
Standard	17622kg	18933kg
Cabin+ ripper	19176kg	-

BLADE	XL	LGP
Blade type	PAT	PAT
Blade capacity	3.22m <sup>3</sup>	4.01m <sup>3</sup>

DIMENSION	XL	LGP
Machine height	3275mm	3275mm
Track grouser height	65mm	65mm
Ground clearance	370 mm	370 mm
Machine length(with draw bar)	5782mm	5782mm
Machine length(with ripper)	6998mm	-
Max. lifting height of blade	1028mm	1028mm
Max. digging depth of blade	642mm	642mm
Digging angle of blade	55°±3°	55°±3°
Blade width	3300mm	4011mm
Blade height	1388mm	1388mm
Width from end of left track shoe to end of right track shoe (standard)	2600mm	2600mm
Min turning radius	3879mm	4012mm

RIPPER	XL	LGP
Type	Three-shank ripper	-
Weight	1035kg	-
Max. ripping depth	600mm	-
Max. lifting height	500mm	-
Ripper length (at deepest ripping)	1530mm	-
Ripper length (at highest ripping)	1230mm	-
Width	1759mm	-
Tilt angle(at highest point)	43°	-
Ripping width	1696mm	-
Distance between ripper teeth	800mm	-



\* THE SPECIFICATIONS ARE SUBJECT TO CHANGE WITHOUT NOTICE. THE PICTURES MAY INCLUDE OPTIONS. THE ACTUAL COLOR & APPEARANCE OF THE PRODUCT MAY DIFFER FROM WHAT IS SHOWN.

## SHANTUI CONSTRUCTION MACHINERY CO., LTD.

ADD: No. 58, G327 Highway Jining City, Shandong, CHINA  
 TEL: +86-537-2909369  
 FAX: +86-537-2311219  
 EMAIL: trade@shantui.com  
 WEB: www.shantui.com

**SHANTUI**  
 LET'S MAKE CONSTRUCTION EASIER