

SHANTUI

DH24-B3

Crawler Dozer



Engine Model: Weichai WD12G250E202
Gross Power: 185kW(251hp)
Operating Weight: 23,820kg

Linde Hydrostatic Travel Drive
electronic control

DH24-B3 SPECIFICATIONS

ENGINE

Engine	Weichai WP12G290E304
Emission	China-II
Rated revolution	1900rpm
Gross power	Light load: 173kW(232hp)/standard: 195kW(261hp)/heavy load: 213kW(285hp)
Net power	Light load: 157kW(210hp)/standard: 179kW(240hp)/heavy load: 198kW(265hp)
Number of cylinder-bore × stroke	6-126mm*155mm
Displacement	11.596L
Max. torque	1457Nm@1200-1500rpm
Min. fuel consumption	200g/kwh
Cooling system	Smart temperature-controlled fan

DRIVE SYSTEM

Drive system	Independent dualcircuit electric control hydrostatic drive, intelligent matching of speedload, "stepless" variable speed, monolever control of travel, speed and steering; steering with load, pivot steering, work flexibly, high efficiency, easy for maintenance				
System overflow pressure	45000 kPa				
Traveling speed	Forward	0~11km/h			
	Backward	0~11km/h			
Max. theoretical traction force	368kN				
Steering	Independent drive of track at both sides to ensure the full power output for pivot steering and steering with load				
Brake	Regular closed multi-disk brake				
Final drive	Double-reduction final drives of spur gear and planetary gear				

CHASSIS SYSTEM	XL	CH	RS	LGP	WH
Type	Pivot, equalizing beam suspended type, semi-rigid structure				
Track shoe type	Single grouser	Single grouser	Single grouser	Wetland	Wetland
Track gauge	2000mm	2000mm	2000mm	2250mm	2250mm
Width of track shoe	560/610/660mm	610/660mm	560/610/660mm	910mm	910mm
Track grounding length	3050mm	3050mm	3050mm	3482mm	3482mm
Track grounding area	34160/37210/40260cm ²	37210/40260cm ²	34160/37210/40260cm ²	63372cm ²	63372cm ²
Number of track shoe	41 pcs/side	41 pcs/side	41 pcs/side	45 pcs/side	45 pcs/side
Grounding pressure (standard configuration)	68.3/62.7/58kPa	64.5/59.6kPa	70/64.3/59.5 kpa	40.9kPa	41.8kPa
Number of carrier roller	2 pcs/side	2 pcs/side	2 pcs/side	2 pcs/side	2 pcs/side
Number of track roller	7 pcs/side	7 pcs/side	7 pcs/side	8 pcs/side	8 pcs/side
Pitch	216mm	216mm	216mm	216mm	216mm

REFILL CAPACITY

Fuel capacity	489L
Coolant liquid capacity	55L
Engine oil capacity	24L
Hydraulic oil tank (travel)	105L
Final drive	30L/side
Transfer case	10L

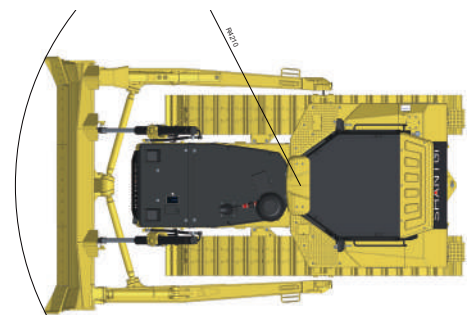
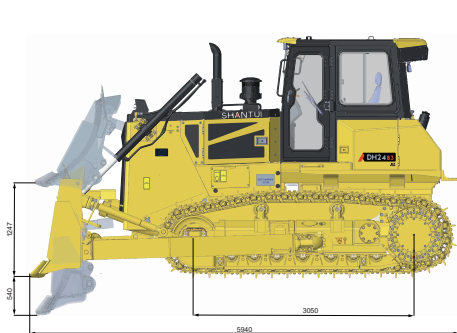
OPERATING WEIGHT	XL	CH	RS	LGP	WH
Standard	23820kg	24475kg	24429kg	26420kg	27030kg

BLADE	XL	CH	RS	LGP	WH
Blade type	Semi-U	U-blade	Heavy-duty blade	Swamp straight-tilt blade	Waste handling blade
Blade capacity	6.5m ³	7.5m ³	8.7m ³	6.42m ³	12.86m ³

DIMENSION	XL	CH	RS	LGP	WH
Machine height (with ROPS)	3335mm	3350mm	3350mm	3525mm	3525mm
Track grouser height	72mm	72mm	72mm	123mm	123mm
Ground clearance	450 mm	450 mm	450 mm	450 mm	450 mm
Machine length (with draw bar)	5940mm	6474mm	5940mm	6097mm	6469mm
Max. lifting height of blade	1247mm	1265mm	1247mm	1300mm	1300mm
Max. digging depth of blade	540mm	545mm	540mm	550mm	550mm
Digging angle of blade	52°±3°(deg.)				
Blade width	3642mm	3800mm	3642mm	4365mm	4365mm
Blade height	1580mm	1294mm	1801mm	1400mm	1981mm
Max. Blade tilt height	840mm	850mm	840mm	680mm	680mm
Width from end of left track shoe to end of right track shoe (standard)	2560mm	2660mm	2560mm	3160mm	3160mm
Min turning radius	4210mm	4204mm	4210mm	4319mm	4316mm

RIPPER

Type	Three-shank ripper
Weight	2646kg
Max. ripping depth	655mm
Max. lifting height	567mm
Ripper length (at deepest ripping)	1882mm
Ripper length (at highest ripping)	1547mm
Tilt angle(at highest point)	2246mm
Departure angle (at highest lifting)	16.35°
Ripping width	2000mm
Distance between ripper teeth	1000mm



* THE SPECIFICATIONS ARE SUBJECT TO CHANGE WITHOUT NOTICE. THE PICTURES MAY INCLUDE OPTIONS. THE ACTUAL COLOR & APPEARANCE OF THE PRODUCT MAY DIFFER FROM WHAT IS SHOWN.

SHANTUI CONSTRUCTION MACHINERY CO., LTD.

ADD: No. 58, G327 Highway Jining City, Shandong, CHINA
 TEL: +86-537-2909369
 FAX: +86-537-2311219
 EMAIL: trade@shantui.com
 WEB: www.shantui.com

SHANTUI
 LET'S MAKE CONSTRUCTION EASIER