

SHANTUI

SD32

Crawler Bulldozer



ENGINE MODEL CUMMINS NTA855-C360S10
GROSS POWER 257kW(350hp)/2000rpm
OPERATING WEIGHT 33,600kg

VALUE THAT WORKS

SD32 TECHNICAL PARAMETERS

ENGINE

Model	Cummins NTA855-C360
Emission standard	China-II
Rated speed	2000rpm
Gross power	257kW
Net power	235kW
Piston displacement	14.01L
Maximum Torque	1509N.m/1400rpm

TRANSMISSION SYSTEM

Transmission system	Hydraulic torque converter + transmission + central drive + final drive
Travel speed at forward/reverse gear	F1:3.6/F2:6.6/F3:11.5 km/h R1:4.4/R2:7.8/R3:13.5 km/h
Traction force	318kN
Steering clutch	Wet-type, multi-disc spring hold-down, hydraulic disengagement
Steering brake	Wet-type, belt-type, foot-operated
FINAL DRIVE	Reduction of dual spur gear, splash lubrication

CHASSIS SYSTEM

Type	Splayed beam oscillating, balance beam suspension structure
Track type	Kingpin single-tooth track
Center distance of crawler	2140mm
Width of track shoe	560/610/660/710mm
Length of track on ground	3150mm
Track grounding area	35280/38430/41580/44730cm ²
Number of Crawler Sections	41
Specific pressure to ground (standard configuration)	-
Number of carrier roller	2/side
Quantity of thrust wheels	7/side
Chain rail pitch	228.6mm
Minimum turning radius	3800mm

MAINTENANCE CAPACITY

Fuel tank capacity	640L
Coolant liquid capacity	74L
Engine oil capacity	47L
Hydraulic fuel tank	164L
Final drive	55L/ONE SIDE

OPERATING WEIGHT

Equipped with ROPS shed + traction frame	35160kg
Equipped with ROPS shed + ripper	39660kg
Equipped with cab + traction frame	33600kg
Equipped with cab + ripper	38100kg

BLADE

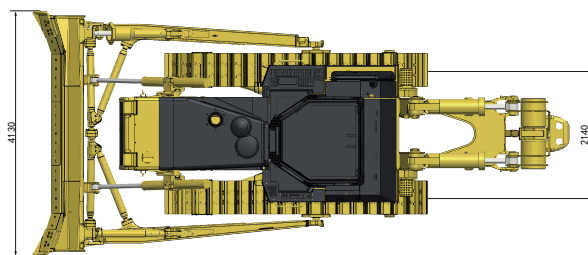
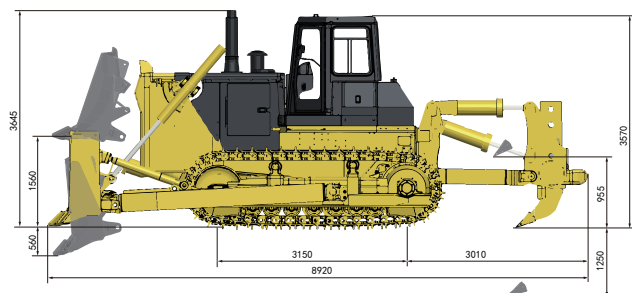
Blade type	S blade, semi-U blade and angular blade
Blade capacity	7.2/9/4.8m ³

DIMENSIONS

Height of complete machine (excluding ROPS)	3650mm
Grouser height	80mm
Ground clearance	500mm
Overall length of complete machine (including traction frame)	6555mm
Overall length of complete machine (excluding traction frame)	8919mm
Maximum Lifting Height of Blade	1560mm
Maximum penetrating depth of blade	560mm
Inclination angle of blade	52°
Blade length	-
Blade height	1590mm
Maximum swing angle of blade	-
Overall Width: At maximum swing angle of blade	4130mm
Blade tilt height	1000mm
The maximum swing angle refers to projection distance from left blade angle to track	-
Track width at both ends	2700mm
The maximum swing angle refers to projection distance from right blade angle to track	-

RIPPER

Type	Single-shank/ three-shank ripper
Penetrating depth	1250/842mm
Lifting height	955/883mm
Tooth spacing	-/1120mm



* The specification is subject to change without advance notice. Images may include optional configurations. The actual color and appearance of the product may differ from what is shown in the images.



Shantui Social

SHANTUI CONSTRUCTION MACHINERY CO., LTD.

ADDRESS: NO. 58, NATIONAL HIGHWAY 327, HIGH-TECH ZONE, JINING CITY, SHANDONG PROVINCE, CHINA

TEL: +86-537-2909369 FAX: +86-537-2311219

EMAIL: trade@shantui.com WEBSITE: www.shantui.com

SHANTUI
VALUE THAT WORKS