

# SHANTUI

## SE245LC

Crawler Excavator



Engine model: Cummins QSB7  
Engine power: 150kW/2050rpm  
Operating weight: 24,800kg  
Bucket capacity: 1.2m<sup>3</sup>

VALUE THAT WORKS

# SE245LC TECHNICAL PARAMETERS

## ENGINE

Model	Cummins QSB7
Type	High pressure common rail, water-cooled, turbocharged
No. of cylinders	6
Emission standard	Tier 3
Displacement	6.7
Rated power	150kW/2050rpm

## HYDRAULIC SYSTEM

Type	Plunger pump
Rated operating flow	2×238L/min

## DIGGING FORCE (ISO6015)

Bucket digging force	172kN
Arm digging force	125kN

## BUCKET

Type	Backhoe bucket
Bucket capacity	1.2m <sup>3</sup>
Bucket width	1346mm

## TRAVEL SYSTEM

Type	Axial variable plunger motor
Number of track rollers	9x2
Number of carrier rollers	2x2
Number of track shoes	51x2
Travel speed	3.5/5.1km/h
Traction force	225kN
Gradeability	70% (35°)

## SWING SYSTEM

Swing motor type	Swash plate plunger motor
Swing speed	0-11r/min
Brake type	Pressure release, mechanical braking

## FUEL TANK CAPACITY (L)

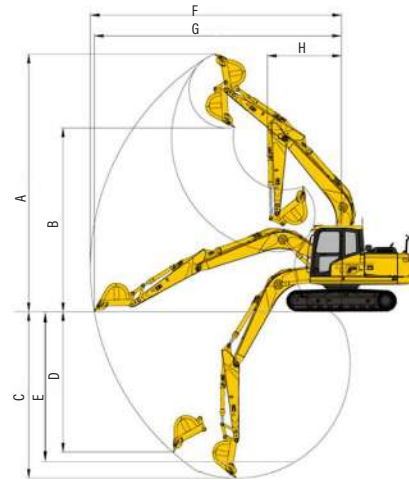
Fuel tank capacity	330
Cooling system	28
Engine oil	22
Hydraulic oil tank	190
System capacity	400

## OPERATING WEIGHT AND GROUND PRESSURE

Ground pressure	47.9kPa
Operating weight	24800kg

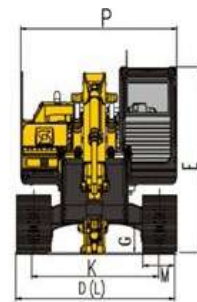
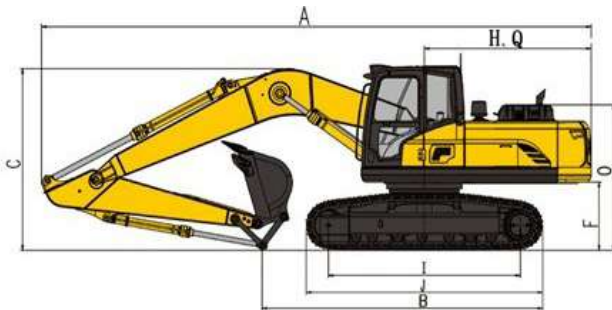
## OPERATING RANGE(MM) (Boom: 5850 mm Arm: 3045 mm)

A Max. digging height	10180
B Max. dumping height	7200
C Max. digging depth	6864
D Max. vertical digging depth	5978
E Max. digging depth cut for 2500mm level bottom	6670
F Max. digging distance	10198
G Max. digging distance at ground level	10015
H Min. swing radius of work equipment	3276



## OVERALL DIMENSION (MM)

A Overall length	9985
B Ground contact length (Transportation)	5350
C Overall height (to top of boom)	3235
D Overall width	3180
E Overall height (to top of cab)	3075
F Ground clearance of counterweight	1083
G Min. ground clearance	465
H Tail swing radius	3000
I Tread	3845
J Track length	4660
K Track gauge	2580
L Track width	3180
M Shoe width	600
O Bonnet height	2410
P Revolving frame width	2725
Q Distance from swivel center to tail	3000



\* THE SPECIFICATIONS ARE SUBJECT TO CHANGE WITHOUT NOTICE. THE PICTURES MAY INCLUDE OPTIONAL CONFIGURATION. THE ACTUAL COLOR & APPEARANCE OF THE PRODUCT MAY DIFFER FROM WHAT IS SHOWN.



Shantui Social

**SHANTUI CONSTRUCTION MACHINERY CO., LTD.**

ADD: NO. 58, G327 HIGHWAY, HI-TECH ZONE, JINING CITY, SHANDONG, CHINA

TEL: +86-537-2909369 FAX: +86-537-2311219

EMAIL: trade@shantui.com WEB: www.shantui.com

**SHANTUI**  
VALUE THAT WORKS